

LESSO GROUP
STOCK CODE: 2128.HK



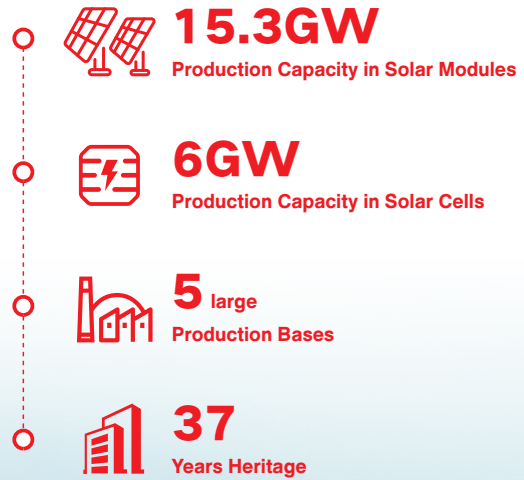
LESSO

LESSO SOLAR PROJECTS

LESSO Group is a Hong Kong-listed (2128.HK) manufacturer of building materials with an annual revenue of over USD4.57 billion from its global operations.

LESSO Solar, a flagship division of LESSO Group, specialises in manufacturing solar panels, inverters, and energy storage systems, and providing solar-energy solutions.

Founded in 2022, LESSO Solar has been growing with spectacular pace. We have a production capacity of 7GW for solar panels in early 2023, and expect a global capacity of over 15.3GW by the end of 2023.





Karamay Desert Solar Power Station

Project Capacity: **600MW** (Phase I)

Location: Karamay, Xinjiang, China

Annual Average Power Generation: 520,918MWh

25-year Power Generation: \approx 13,022,964MWh

Project Area: 15,000,000m²

Module Type: P-type bifacial module - 540W

Annual CO2 Emission Reduction: \approx 519,356t





Ningxiang Rooftop Solar Power Station

Project Capacity: **9.75MW**

Location: Changsha, Hunan, China

Annual Average Power Generation: 8,106MWh

25-year Power Generation: \approx 202,644MWh

Project Area: 36,288m²

Module Type: P-type module - 540W

Annual CO2 Emission Reduction: \approx 8,081t



Shunde Haitian Factory Rooftop Solar Power Station

Project Capacity: **6.14MW**

Location: Shunde, Foshan, Guangdong, China

Annual Average Power Generation: 5,733MWh

25-year Power Generation: \approx 143,315MWh

Project Area: 44,145m²

Module Type: P-type bifacial module - 550W

Annual CO2 Emission Reduction: \approx 5,715t



Dingan Rooftop Solar Power Station

Project Capacity: **6MW**

Location: Dingcheng, Dingan, Hainan, China

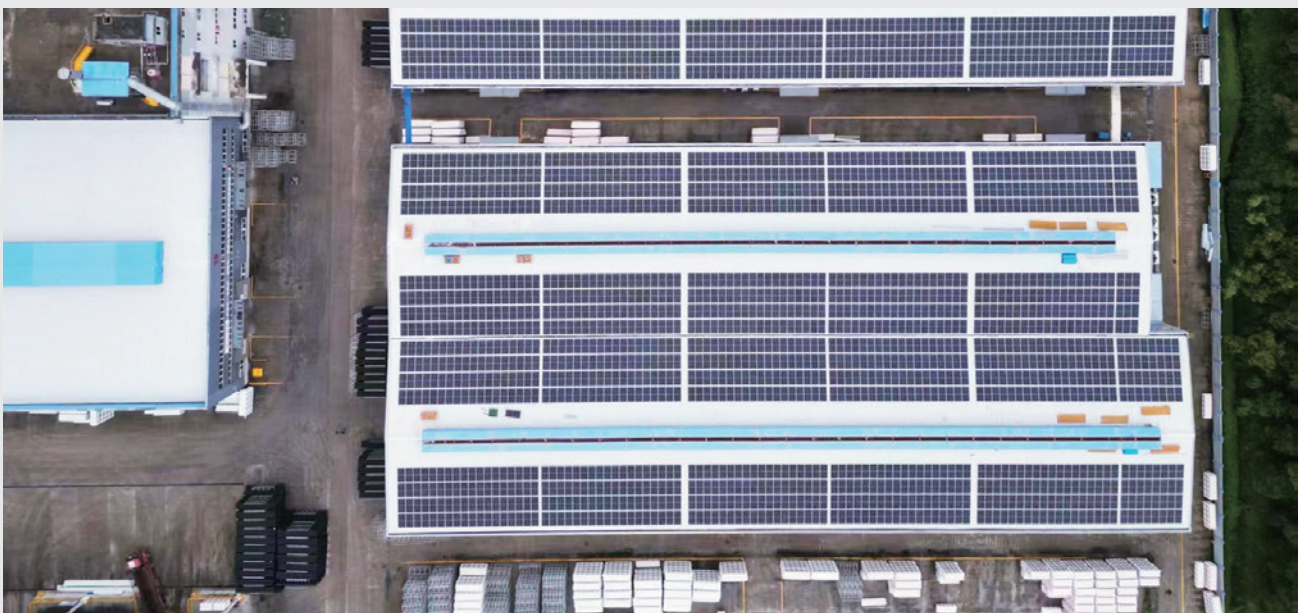
Annual Average Power Generation: 6,050MWh

25-year Power Generation: $\approx 151,253$ MWh

Project Area: 55,745m²

Module Type: P-type module - 540W

Annual CO2 Emission Reduction: $\approx 6,031$ t





Ducheng Rooftop Solar Power Station

Project Capacity: 5MW

Location: Ducheng, Yunan, Yunfu, Guangdong, China

Project Area: 45,484m²

Module Type: P-type module - 540W

Annual Average Power Generation: 4,600MWh

25-year Power Generation: ≈ 114,992MWh

Annual CO2 Emission Reduction: ≈ 4,586t



Zhuhai Zhonghang Tongfei Factory Rooftop Solar Power Station

Project Capacity: **2.67MW**

Location: Jinwan District, Zhuhai, Guangdong, China

Annual Average Power Generation: 2,792MWh

Module Type: P-type module - 540W

25-year Power Generation: \approx 69,798MWh

Annual CO2 Emission Reduction: \approx 2,784t



Chongkou Chemical Factory Rooftop Solar Power Station

Project Capacity: **2.2MW**

Location: Shunde, Foshan, Guangdong, China

Annual Average Power Generation: 2,051MWh

25-year Power Generation: $\approx 51,267$ MWh

Project Area: 18,448m²

Module Type: P-type module - 545W / 655W

Annual CO2 Emission Reduction: $\approx 2,045$ t



Genghe Rooftop Solar Power Station

Project Capacity: **1.28MW**

Location: Genghe, Gaoming, Foshan, Guangdong, China

Annual Average Power Generation: 1,184MWh

Module Type: P-type module - 550W

25-year Power Generation: $\approx 29,599$ MWh

Annual CO2 Emission Reduction: $\approx 1,180$ t





Dongqing Trade Rooftop Solar Power Station

Project Capacity: 1.16MW

Location: Huaihua, Hunan, China

Project Area: 8,955m²

Module Type: P-type module - 540W

Annual Average Power Generation: 958MWh

25-year Power Generation: ≈ 23,957MWh

Annual CO2 Emission Reduction: ≈ 955t



Tianfeng Rice Industry Factory Rooftop Solar Power Station

Project Capacity: **1MW**

Location: Jiangling, Jingzhou, Hubei, China

Annual Average Power Generation: 863MWh

25-year Power Generation: \approx 21,581MWh

Project Area: 7,313m²

Module Type: P-type module - 545W

Annual CO2 Emission Reduction: \approx 861t



Huaxia Jinqiao Factory Rooftop Solar Power Station

Project Capacity: **839KW**

Location: Xian, Xianning, Hubei, China

Annual Average Power Generation: 763MWh

25-year Power Generation: $\approx 19,077$ MWh

Project Area: 9,324m²

Module Type: P-type module - 545W

Annual CO2 Emission Reduction: ≈ 761 t



Muling Kemian Wood Industry Factory Rooftop Solar Power Station

Project Capacity: **799.4KW**

Location: Mudanjiang, Heilongjiang, China

Annual Average Power Generation: 776MWh

25-year Power Generation: $\approx 19,402\text{MWh}$

Project Area: $7,663\text{m}^2$

Module Type: P-type module - 545W

Annual CO2 Emission Reduction: $\approx 774\text{t}$





Huihuang Wear Resistant Factory Rooftop Solar Power Station

Project Capacity: **542KW**

Location: Liuzhou, Guangxi, China

Project Area: 6,182m²

Module Type: P-type module - 545W

Annual Average Power Generation: 438MWh

25-year Power Generation: ≈ 10,939MWh

Annual CO2 Emission Reduction: ≈ 436t



Tianming New Energy Rooftop Solar Power Station

Project Capacity: **432KW**

Location: Shunde, Foshan, Guangdong, China

Module Type: P-type module - 545W

Annual Average Power Generation: 403MWh

25-year Power Generation: $\approx 10,075\text{MWh}$

Annual CO2 Emission Reduction: $\approx 402\text{t}$



Thuizhou Traditional Chinese Medicine Rooftop Solar Power Station

Project Capacity: **400KW**

Location: Zhongkai District, Huizhou, Guangdong, China

Project Area: 4,163m²

Annual Average Power Generation: 383MWh

Module Type: P-type module - 545W

25-year Power Generation: ≈ 9,569MWh

Annual CO2 Emission Reduction: ≈ 382t



Our Choice Mall Rooftop Solar Power Station

Project Capacity: **167KW**

Location: Longjiang, Shunde, Guangdong, China

Annual Average Power Generation: 156MWh

25-year Power Generation: \approx 3,908MWh

Module Type: P-type module - 540W

Annual CO2 Emission Reduction: \approx 155t

LESSO

Lesso New Energy Development Private Limited

One Raffles Quay, North Tower, #19-03, Singapore 048583